

QCTH-N / QCTH-B CAM RECEPTACLES

HS Stainless Steel

IMAO



QCTH-N

(Thin-Plate Mount)



QCTH-N-SUS

(Thin-Plate Mount, Stainless Steel)



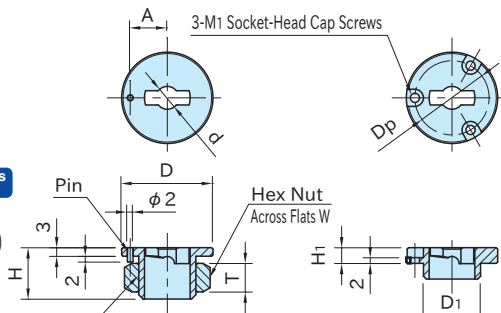
QCTH-B

(Embedded Mount)



QCTH-B-SUS

(Embedded Mount, Stainless Steel)



QCTH-N **QCTH-N-SUS**

(Thin-Plate Mount)
(Thin-Plate Mount, Stainless Steel)

QCTH-B **QCTH-B-SUS**

(Embedded Mount)
(Embedded Mount, Stainless Steel)

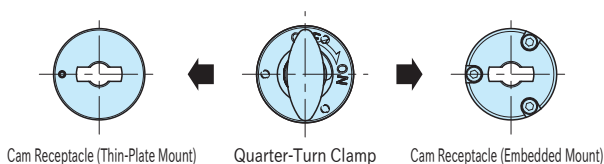
Type	Body	Nut
QCTH-N	SCM440 steel	Stainless steel
QCTH-B	Electroless nickel plated	—
QCTH-N-SUS	SCS24 stainless steel	Stainless steel
QCTH-B-SUS	(Equivalent to SUS630)	—

Part Number	Proper Plate Thickness	D	H	d (+0.08 +0.04)	A (±0.1)	M	T	W	D ₁ (-0.04 -0.08)	H ₁	M ₁	D _p	Weight (g)	Proper Quarter-Turn Clamps	
QCTH0525-N	Thin-Plate Mount	6~10	25	-0.04	16	5	10.5	M14×1.5 (Fine Thread)	8	22	—	—	40	QCTH	0525-10
QCTH0525-N-SUS														QCTH-S	
QCTH0834-N		6~12	32	-0.08	18	8	13	M20×1.5 (Fine Thread)	10	30	—	—	55	QCTH-L-S	0834-14
QCTH0834-N-SUS														QCTH-SUS	
QCTH0525-B	Embedded Mount	Over 10	25	9	5	—	—	—	14	4.5	M2	21	20	QCTHH	0525-10
QCTH0525-B-SUS														QCTHA	
QCTH0834-B		Over 12	32	11	8	—	—	—	20	5.5	M3	26	35	QCTHA-S	0834-14
QCTH0834-B-SUS														QCTHA-SUS	

Supplied With

- **QCTH0525-B**/**QCTH0525-B-SUS** : 3 of socket-head cap screws(stainless steel), M2×0.4-5L
- **QCTH0834-B**/**QCTH0834-B-SUS** : 3 of socket-head cap screws(stainless steel), M3×0.5-6L

Installing Position

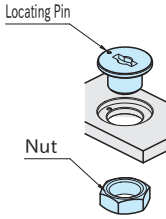


Cam Receptacle (Thin-Plate Mount)

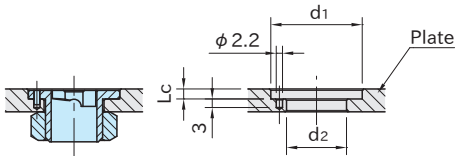
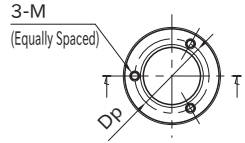
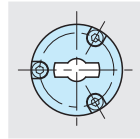
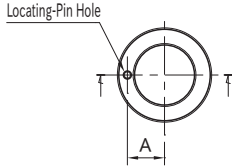
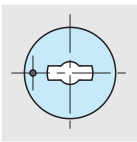
Quarter-Turn Clamp

Cam Receptacle (Embedded Mount)

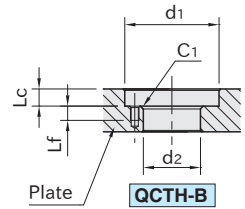
How To Install



Locate the Cam Receptacle with the locating pin and fasten it with the nut.



QCTH-N
(Thin-Plate Mount)



QCTH-B
(Embedded Mount)

Part Number	Proper Plate Thickness	d ₁	d ₂	A (±0.1)	L _C (^{+0.10} / ₀)	M	L _f	D _p	
QCTH0525-N	Thin-Plate Mount	6~10	25	+0.10	3.5	—	—	—	
QCTH0525-N-SUS		6~12	32	+0.05					
QCTH0834-N			21	13					
QCTH0834-N-SUS	Embedded Mount	Over 10	26	14	+0.10	5	M2×0.4	4	21
QCTH0525-B									
QCTH0525-B-SUS									
QCTH0834-B									
QCTH0834-B-SUS									

Reference

"Accuracy" of [QCTHA](#) [QCTH](#) [QCTHL](#) [QCTHH](#) Quarter-Turn Clamps